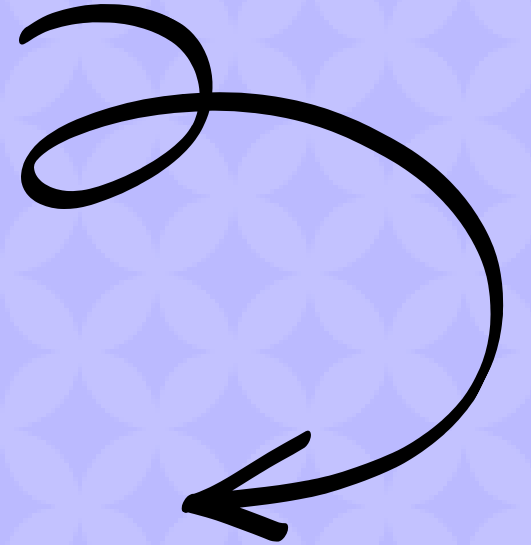






TRI-M MUSIC
HONOR SOCIETY
24-25 1ST MEETING

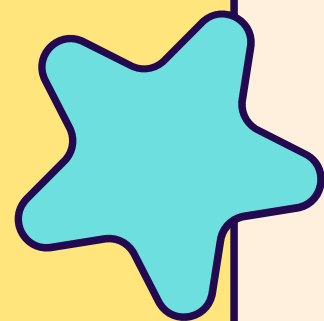


WHAT IS TRI-M?



Tri-M Music Honor Society aims to develop future leaders in music education and advocacy. With over 1,800 chapters nationwide and more than 75,000 student members, Franklin Academy proudly hosts Chapter 7731.

Many students involved in music courses at Franklin, are active members of Tri-M. As part of this society, we participate in various projects and service opportunities, supporting the music department through concerts, field trips, fundraisers, and other events.



TRI-M 2024-2025 EXECUTIVE BOARD

Introducing This Year's Tri-M Officers! Please Give a Warm Welcome to the Following:

- President: Jose Rampolla-Lopez
- Vice President: Milania Cabrera
- Secretary: Makenzy Jordan
- Stage Manager (Band): Aviana Cabrera
- Stage Manager (Chorus): Luna Bacca
- Stage Manager (Orchestra): Genesis Alvarez
- Public Relations Officers: Esteban Evangelista & Lissa Petit





MEETINGS

Monday, September 9 (2:45-4:00 PM)

FORMS/FEEES DUE TODAY!

Monday, October 7 (2:45-4:00 PM)

Monday, November 4 (2:45-4:00 PM)

Monday, December 2 (2:45-4:00 PM)

Monday, January 13 (2:45-4:00 PM)

Monday, February 3 (2:45-4:00 PM)

Monday, March 4 (2:45-4:00 PM)

Monday, April 7 (2:45-4:00 PM)

Monday, May 5 (2:45-4:00 PM)



MEETINGS OVERVIEW

#1

Meetings will be held on the first Monday of each month from 2:45 PM to 4:00 PM.

Attending these meetings is an important way to earn Tri-M points.

#2

During these meetings, we will prepare for upcoming concerts, including assigning concert roles, organizing decorations, and sharing important details.

Additionally, we will cover fundraisers and school events.



CONCERT JOBS



Runner – Ensures students remain in their holding room until it's their turn to perform. When it's time, runners escort them to the stage, ensuring they stay quiet. They also communicate with other runners or officers to keep the event running smoothly.

Stage Crew (Band, Choir, Orchestra) – Assists Stage Managers with setting up the stage for concerts and helps transition between different class performances during the event.

Usher – Directs families to the appropriate seating areas and helps ensure smooth and efficient entry to the concerts.

Ticket Table – Manages event entry by assisting parents with purchasing tickets for admission.

UPCOMING FRANKLIN ACADEMY MUSIC EVENTS

BAND

October 1st – Fall Concert at 7:00 PM, call time at 6:00 PM

December 12th – Winter Concert at 7:00 PM, call time at 6:00 PM

March 13th – Movie Concert at 7:00 PM, call time at 6:00 PM

May 22nd – Spring Concert at 7:00 PM, call time at 6:00 PM

All rehearsals are from 2:45 PM to 5:00 PM.

<https://www.franklinacademyb.com/calendar>

ORCHESTRA/CHORUS

October 17th – Fall Concert at 7:00 PM, call time at 6:00 PM

December 13th – Winter Concert at 7:00 PM, call time at 6:00 PM

February Concert – To Be Announced

May Concert – To Be Announced

All rehearsals are from 3:00 PM to 5:00 PM.

<https://www.franklinacademyb.com/calendar>

OTHER EVENTS

October 4th – FA Cup (Intermediate Band/Advanced Band/Drumline)

October 9th – Homecoming: Powderpuff Game (Intermediate Band/Advanced Band/Drumline)

October 10th – Pep Rally (Intermediate Band/Advanced Band/Drumline)

November 10th – Autism Speaks Walk (Intermediate Band/Advanced Band/Drumline)

November 16th – Alzheimer's Walk at FIU (Intermediate Band/Advanced Band/Drumline)

December 5th – Holiday Solo Recital (Media Center at 7:00 PM)



REMINDERS

The Tri-M fee of \$50 was due today. If you haven't paid it yet, please do so as soon as possible!

For upcoming events, if you're able, please sign up to bring materials such as food or decorations. Doing so will earn you Tri-M points.





Franklin
ACADEMY



Thank you!!! :)

